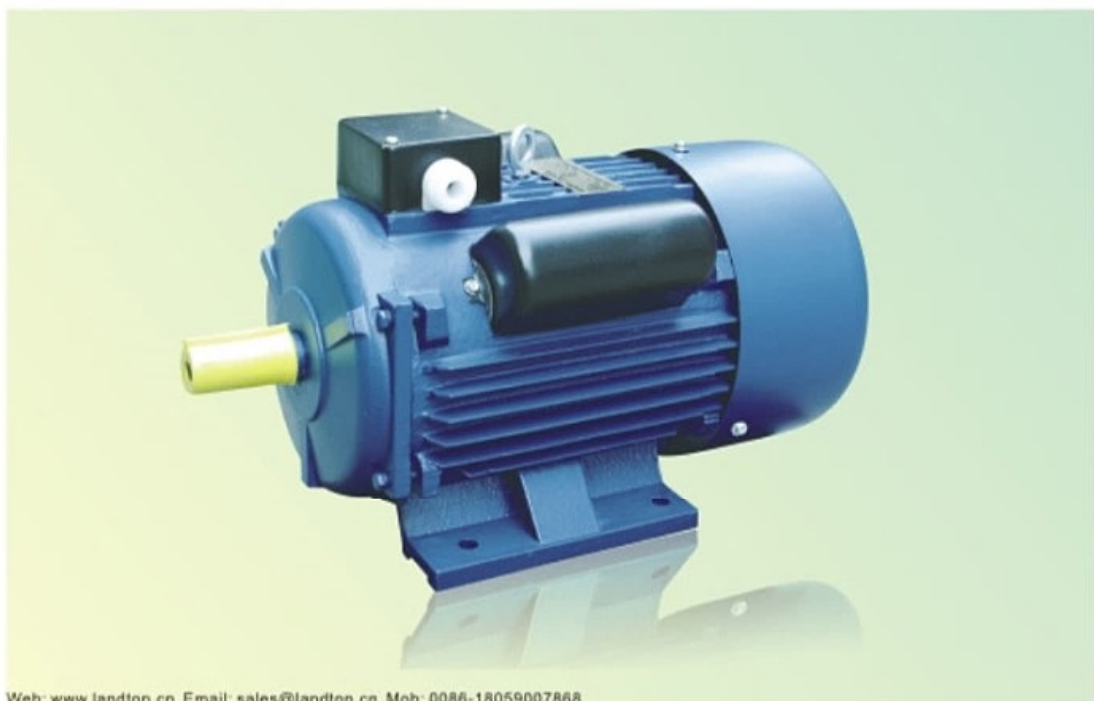


YC/YCL series

Heavy Duty Single Phase Motor



Web: www.landtop.cn Email: sales@landtop.cn Mob: 0086-18059007868

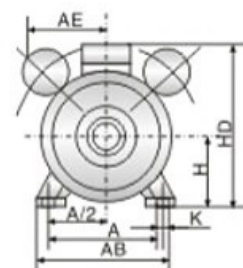
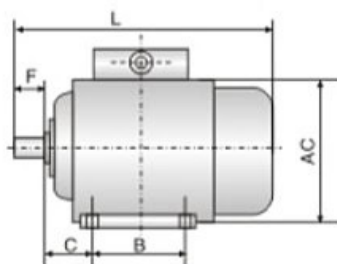
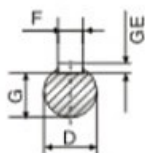
Operating conditions:

1. Ambient temperature: $-15^{\circ}\text{C} \leq \theta \leq 40^{\circ}\text{C}$
2. Altitude: $\leq 1000\text{m}$
3. Rated voltage: 220V, other voltage on request
4. Rated frequency: 50HZ, other frequency on request
5. Duty/Rating: Continuous(S1)
6. Insulation class: Class B/F
7. Protection class: IP44/IP54
8. Cooling method: IC0141

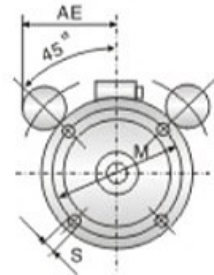
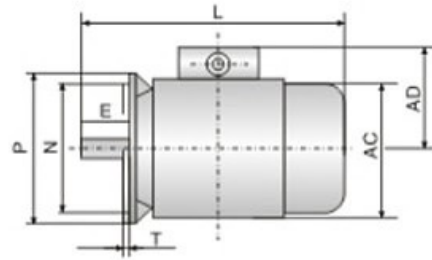
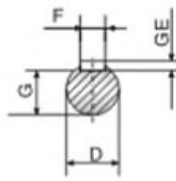


Overall and mounting dimension

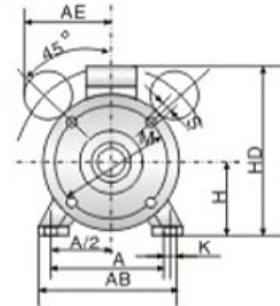
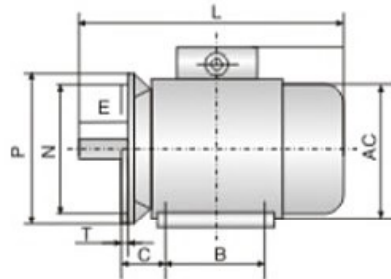
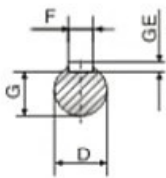
B3



B5



B35



Frame Size	Mounting Dimension(mm)														Overall Dimension(mm)				
	A	B	C	D	E	F	G	H	K	M	N	P	S	T	AB	AC	AD	HD	L
71	112	90	45	14	30	5	11	71	7	130	110	160	10	3.5	145	145	140	180	255
80	125	100	50	19	40	6	15.5	80	10	165	130	200	12	3.5	175	160	150	200	310
90S	140	100	56	24	50	8	20	90	10	216	180	250	15	4	180	185	160	240	355
90L	140	125	56	24	50	8	20	90	10	216	180	250	15	4	180	185	160	240	385
100L	160	140	63	28	60	8	24	100	12	216	180	250	15	4	205	220	180	260	415
112M	190	140	70	28	60	8	24	112	12	216	180	250	15	4	245	250	190	300	440
132S	216	140	89	38	80	10	33	132	12	265	230	300	15	4	280	262	210	315	470
132M	216	170	89	38	80	10	33	132	12	265	230	300	15	4	280	262	210	315	495

Technical data

Type	Output		Current (A)	Tst/Tn	Ist/In	Speed (rpm)
	kW	HP				
YC711-2	0.18	0.25	1.89	3.0	7	2800
YC712-2	0.25	0.33	2.4	3.0	7	2800
YC80A-2	0.37	0.5	3.3	3.0	6.5	2840
YC80B-2	0.55	0.75	4.7	3.0	6.5	2860
YC80C-2	0.75	1	6.1	2.8	7	2880
YC90S-2	1.1	1.5	10.5	2.8	7	2900
YC90L-2	1.5	2	12.4	2.8	7	2920
YC100L-2	2.2	3	18.8	2.6	7	2940
YC112M1-2	3	4	21.4	2.2	7	2900
YC112M2-2	3.7	5	24.8	2.2	7	2900
YC711-4	0.12	0.16	1.88	3.0	9	1400
YC712-4	0.18	0.25	2.49	2.8	7	1400
YC80A-4	0.25	0.3	3.1	3.0	6	1410
YC80B-4	0.37	0.5	4.1	3.0	6	1420
YC80C-4	0.55	0.75	5.6	3.0	6	1430
YC90S-4	0.75	1	8.3	2.8	6.5	1440
YC90L-4	1.1	1.5	11.2	2.8	6.5	1450
YC100L-4	1.5	2	12.5	2.8	6.5	1460
YC112M-4	2.2	3	18.3	2.6	6.5	1470
YC132SA-4	3	4	19	2.2	6.5	1460
YC132SB-4	3.7	5	22	2.2	6.5	1460
YC132M1-4	5.5	7.5	32.5	2.0	6.5	1460
YC132M2-4	7.5	10	40.0	2.0	6.5	1460

Note: The tabulated values are those under rated voltage 220v, and rated frequency 50Hz.